

TECHNICAL BULLETIN

88/12 TUNGSTEN CARBIDE COBALT

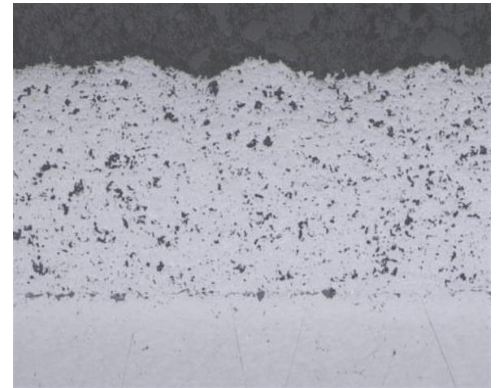
CT2104-1

OVERVIEW

CT2104-1 is an 88% tungsten carbide/12% cobalt coating applied using the plasma spray process. It is a high quality coating for low temperature wear resistance, highly recommended for resistance to particle erosion, hard surfaces, fretting and abrasive grains.

TYPICAL PROPERTIES

Nominal Composition:	88% Tungsten Carbide, 12%
Bond Strength:	6,500 psi
Coating Porosity:	Less than 2%
Coating Hardness:	DPH ₃₀₀ 900-1100
As-sprayed Surface Roughness:	250-400 Ra



FOR THE FOLLOWING APPLICATIONS

CT2104-1 is used in applications such as aircraft flap tracks, aircraft turbine shafts, exhaust fans, concrete mixing equipment, and plug gages.

FINISHING

Finish CT2104-1 by grinding with diamond wheels. CT2104-1 should be wet ground. CTS can recommend grinding parameters if needed.

SPECIFICATIONS

CTS-2104-1 meets the following specifications:

GEAE:	B50TF27A
Rolls Royce:	EMS 56756
MSRR:	9507/58
AMS:	7880

CTS-Midwest
5901 Creek Rd.
Cincinnati, OH 45242
(513) 793-0670 | F: (513) 793-4254

CTS-South
11766 NC Highway 210
Rocky Point, NC 28457
(910) 675-2909 | F: (910) 675-0806

CTS-East
80 Fadem Rd.
Springfield, NJ 07083
(973) 379-0003 | F: (973) 379-4066

CTS-Texas
4011 Chance Ln.
Rosharon, TX 77583
(281) 431-1629 | F: (281) 431-2179