

# TECHNICAL BULLETIN

83/17 TUNGSTEN CARBIDE COBALT

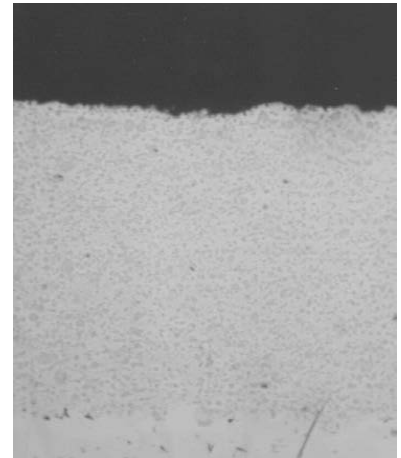
CT2110-1

## OVERVIEW

CT2110-1 is an 83% tungsten carbide/17% cobalt coating applied using the plasma spray process. It is very hard, dense, tough coating exhibiting high bond strength, excellent fret wear resistance, good abrasive wear resistance, good impact wear resistance and can be finished to a very fine finish.

## TYPICAL PROPERTIES

<b>Nominal Composition:</b>	83% WC, 17% Co
<b>Bond Strength:</b>	9,000 psi
<b>Coating Porosity:</b>	Less than 1%
<b>Coating Hardness:</b>	DPH <sub>300</sub> 750-950
<b>As-sprayed Surface Roughness:</b>	110-140 Ra



## FOR THE FOLLOWING APPLICATIONS

CT2110-1 is used in applications such as aircraft blade mid span dampers, aircraft flap tracks, wire drawing blocks, oil field sucker rods, and labyrinth seal teeth.

## FINISHING

Finish CT2110-1 by grinding with diamond wheels. CT2110-1 should be wet ground. CTS can recommend grinding parameters if needed.

## SPECIFICATIONS

CT-2110-1 meets the following specifications:

<b>GEAE:</b>	B50TF167A
<b>Rolls Royce:</b>	EMS 57745
<b>MSRR:</b>	9507/42