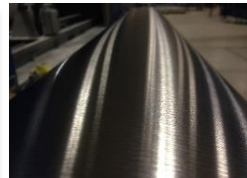
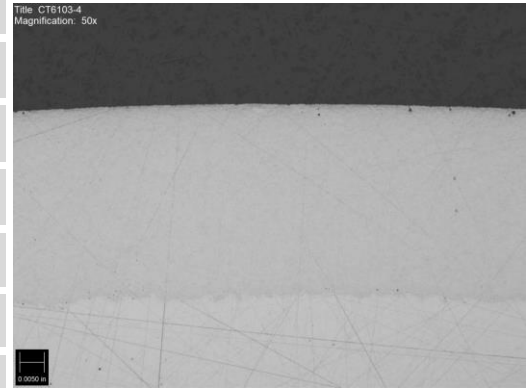


OVERVIEW

CT6103-4 a Ni based High Temperature Alloy applied using the Spray and Fuse Process. The coating is very dense, wear resistant, metallurgically bonded and suitable for use where resistance to high temperatures, wear, and corrosion are needed.

TYPICAL PROPERTIES

Nominal Composition:	Ni Bal, 17% Cr, 4% Si, 4% Fe, 3.5% B
Bond Strength:	>> 10,000 psi
Coating Porosity:	Less than 0.5%
Coating Hardness:	HRC 58-64
As-sprayed Surface Roughness:	200-350 Ra
Machined Surface Roughness:	Variable, Per Customer Requirement
Service Temperature:	≤ 750°C (1380°F)



FOR THE FOLLOWING APPLICATIONS

CT6103-4 is used on table rolls for steel processing, oil industry slush pumps, piston rings, hydraulic turbine wear rings, Sucker Rod Couplings, and exhaust valves/valve seats.

FINISHING

Finish CT6103-4 by grinding with diamond wheels. CTS can recommend grinding parameters if needed.

SPECIFICATIONS

CT6103-4 meets the following specifications:

Commercial

CTS Ohio
5901 Creek Road
Cincinnati, OH 45242
(513) 793-0670 local
(513) 793-4254 fax

CTS North Carolina
11766 NC Highway 210
Rocky Point, NC 28457
(910) 675-2909 local
(910) 675-0806 fax

CTS New Jersey
80 Fadem Rd
Springfield, NJ 07081
(973) 379-0003 local
(973) 379-3007 fax

CTS Texas
4303 South Drive
Houston, TX 77053
(281) 431-1629 local
(281) 431-2179 fax

CTS Connecticut
68 Prospect Hill Road
East Windsor, CT 06088
(855) 210-8723